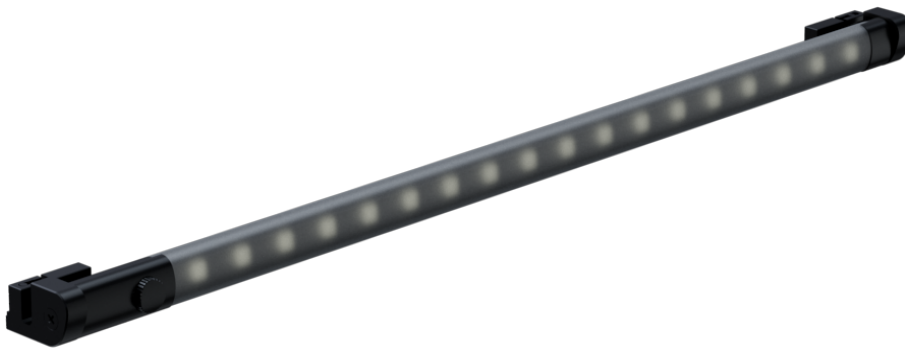
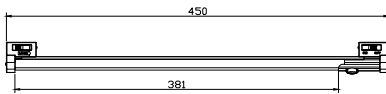




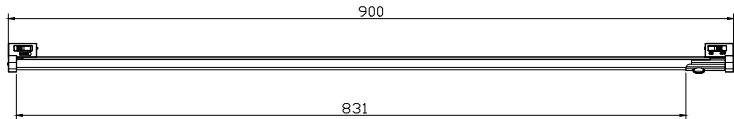
SCAN
TO VIEW VIDEO



L-MTBA-01-450



L-MTBA-01-900



FEATURES

- Compatible with the H-track (L-MTHTK) and O-track (L-MTOTK) only
- Available with Clear or Frosted Filters
- Onboard Dimmer and Tilt function
- Apart from where the lightbar connects on either side - spotlights can be added all the way along the same track
- Not compatible with the recessed track



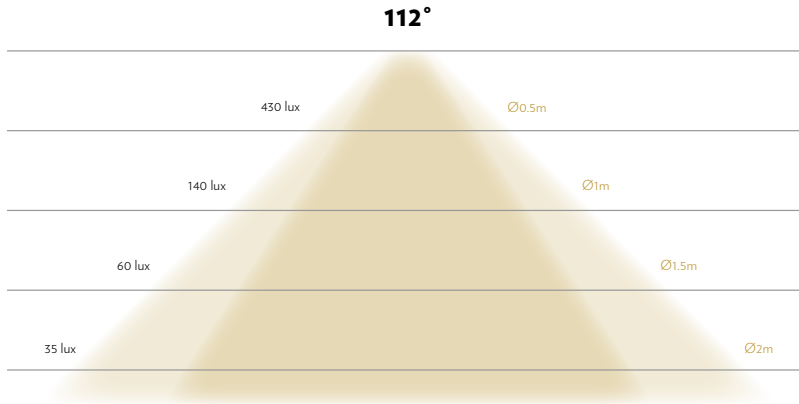
TECHNICAL DATA

	L-MTBA-01-450	L-MTBA-01-700	L-MTBA-01-900
Voltage	12 VDC	12 VDC	12 VDC
Wattage Once Used	6.8W	11.5W	15.2W
Input Current	570mA	958mA	1260mA
Beam Angles	90°	90°	90°
Tilt	0-50°	0-50°	0-50°
Luminous Flux & Lumens	370lm	620lm	820lm
Color Temperatures Available	3000K/4000K/5000K	3000K/4000K/5000K	3000K/4000K/5000K
Adapter	Luxam Micro Track	Luxam Micro Track	Luxam Micro Track
Dimmable Options	On board Dimmer: PWM, range 0-100%	On board Dimmer: PWM, range 0-100%	On board Dimmer: PWM, range 0-100%
CRI	97+	97+	97+
Weight	120g	187g	255g
Main Material	Aluminum / PC	Aluminum / PC	Aluminum / PC
Color Finishing	Black, White and Silver	Black, White and Silver	Black, White and Silver
Working Temperature	recommended 10°C to 25°C	recommended 10°C to 25°C	recommended 10°C to 25°C
Storage Temperature	recommended 22°C	recommended 22°C	recommended 22°C
Certificates / Standard	UL, CE	UL, CE	UL, CE
Warranty	5 years	5 years	5 years
Class	◊II	◊II	◊II
Protection Rating	IP30	IP30	IP30
Drivers Compatible CC/CV	CV	CV	CV
Lifespan	50000H	50000H	50000H
Lens	none	none	none
LED	SMD Ceramic Led	SMD Ceramic Led	SMD Ceramic Led
Optic	In- house Slot for LSD filters	In- house Slot for LSD filters	In- house Slot for LSD filters
Dimensions	450*27*38 (mm)	700*27*38 (mm)	900*27*38 (mm)
Indoor Use	only	only	only

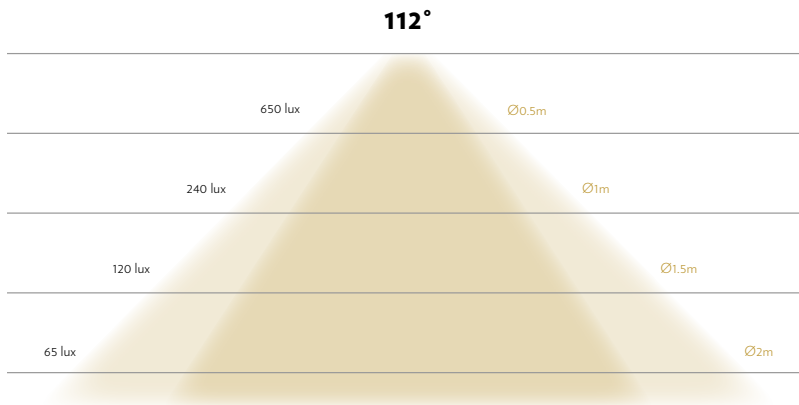


PHOTOMETRICS

L-MTBA-450 Lightbar 7W (18")



L-MTBA-900 Lightbar 15W (36")





DRIVERS

L-MTBA-01-450

Driver	# Fixtures/Driver*	Current
LPV-100-12	9 Fixtures	CV
LPV-60-12	5 Fixtures	CV
LPV-35-12	3 Fixtures	CV
NPF-90-12	10 Fixtures	CV & CC
NPF-40-12	4 Fixtures	CV & CC

L-MTBA-01-900

Driver	# Fixtures/Driver*	Current
LPV-100-12	5 Fixtures	CV
LPV-60-12	3 Fixtures	CV
LPV-35-12	1 Fixtures	CV
NPF-90-12	4 Fixtures	CV & CC
NPF-40-12	2 Fixtures	CV & CC