

## Drilling features

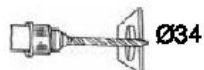
**Through panel gland M 32**



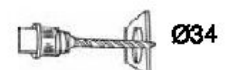
**Main connector**



**Blanking plug M 32**



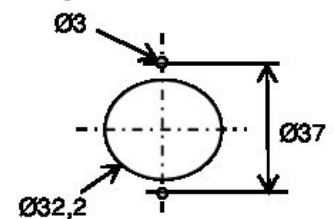
**Reductor to illuminator**



**Mini downlight with clamping**



**Mini downlight fixation by 2 screws**



**Micro downlight**



**Lightstick Ø16mm**



**Lightstick Ø20mm**



For additional specifications contact Luxam