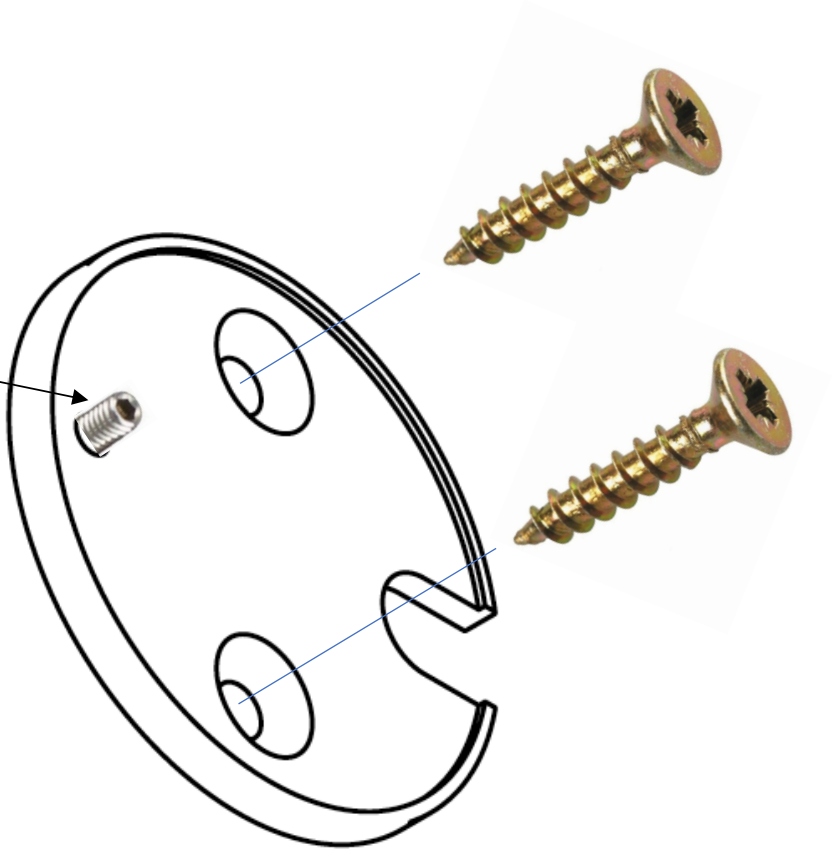


Assembly of the plate

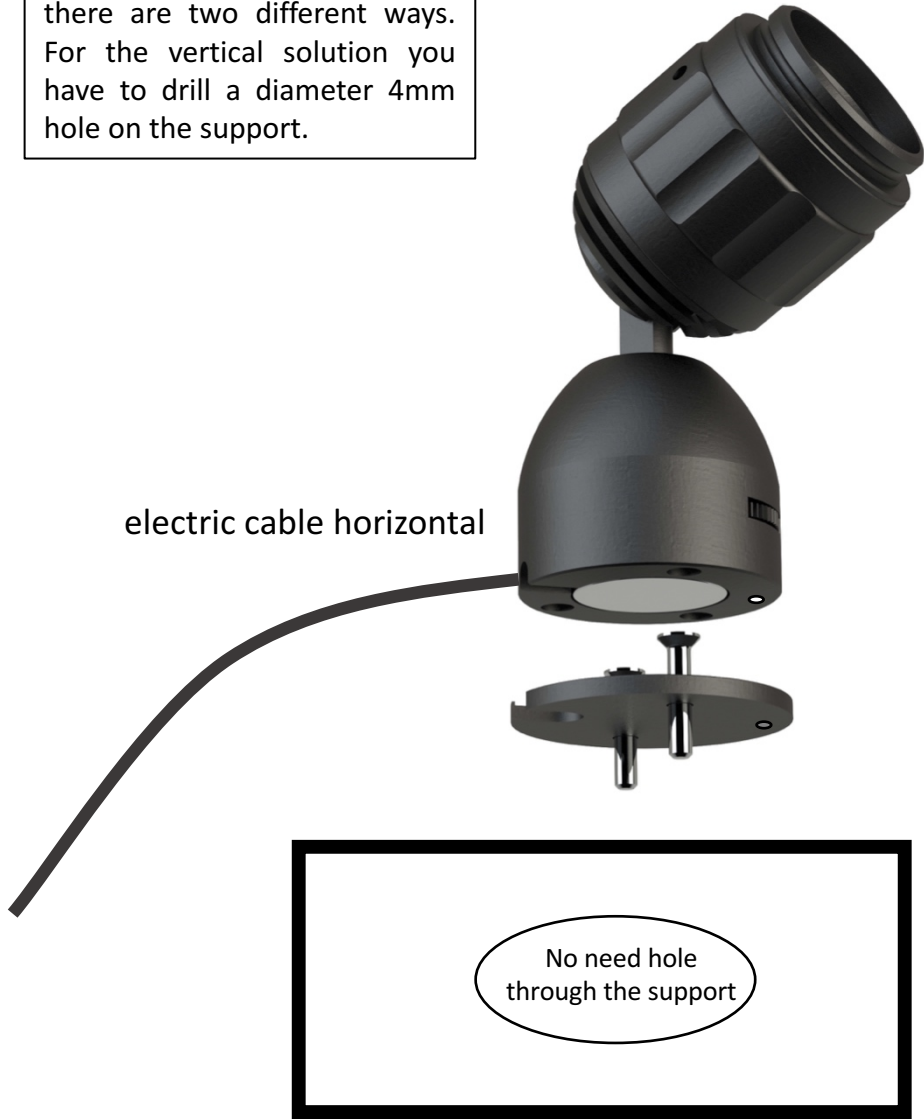


On the sample we sent to you you have to add the M3x6mm screw and drill a hole on the body of the standalone according to the pictures below. Use the round plate as a gauge. *This will be done at the factory for the mass production.*



To manage the electric cable there are two different ways. For the vertical solution you have to drill a diameter 4mm hole on the support.

electric cable horizontal



electric cable vertical

